



N O W L E A S I N G

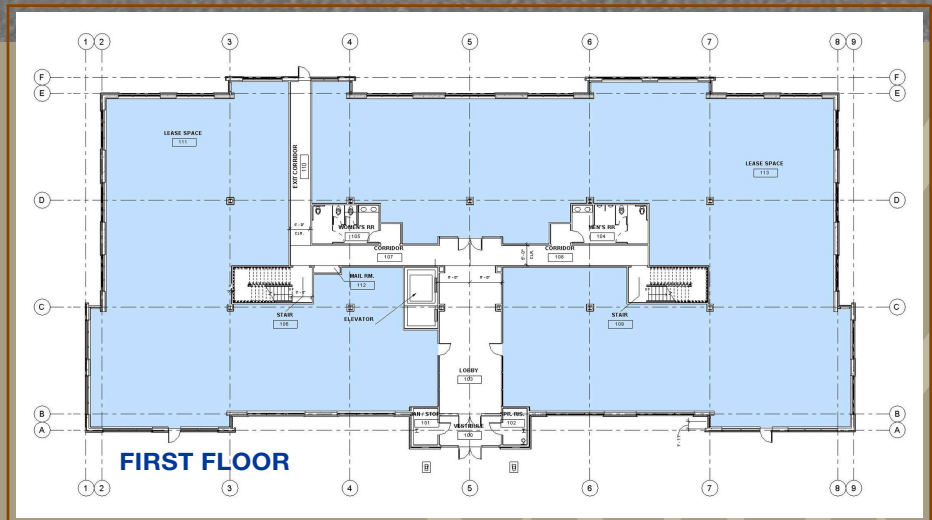
RIVERWALK PLACE

2900 S. Telephone Road
Moore, Oklahoma

**AVAILABLE
FOR OCCUPANCY
WINTER 2011**

Building Size: 31,500 sf
Lease Rate: \$20.75 per sf

IDEAL LOCATION FOR MEDICAL & PROFESSIONAL OFFICE SPACE



Michael C. Platt, CCIM
Direct: 405-562-7492
michael@vanguarddevelopment.com

Steven E. Cottom, CCIM
Direct: 405-562-7493
steve@vanguarddevelopment.com

11600 Broadway Extension
Suite 250
Oklahoma City, OK 73114

Phone: 405-840-5081
Fax: 405-840-5084

www.vanguarddevelopment.com

- Building Size: 31,500 sf ±
- Floor Plates: 15,750 sf ±
- Suites from 1,500 sf to 15,750 sf ±
- First generation office space: Finish to suit
- Great Visibility from I-35
110,000 vehicles per day
- Located on a Growing Medical Corridor:
 - 1.5 miles from Moore Medical Complex
 - 3 miles from Norman Regional Healthplex
- Excellent access via SW 19th St. or Indian Hills Rd. exits
- Covered Parking Available
- 24 hour key card access
- Video surveillance
- Close proximity to restaurants, retail amenities, hotels, & hospitals

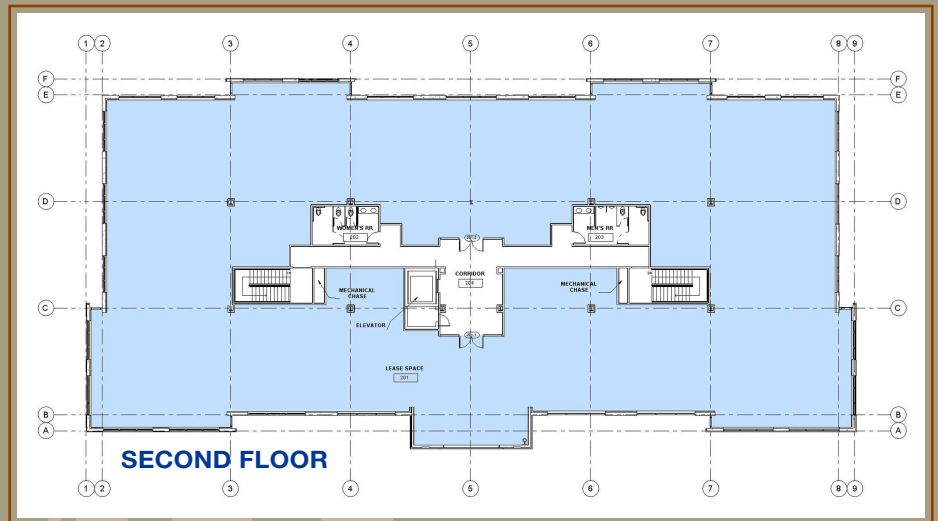


vanguard
DEVELOPMENT

RIVERWALK PLACE

2900 S. Telephone Road
Moore, Oklahoma

Building Size: 31,500 sf
Lease Rate: \$20.75 per sf



Michael C. Platt

Direct: 405-562-7492

michael@vanguarddevelopment.com

Steven E. Cottom

Direct: 405-562-7493

steve@vanguarddevelopment.com

ACCESSIBILITY

- Ideally located on Telephone Road near I-35 and S.W. 19th
- Minutes from Norman and south Oklahoma City trade areas